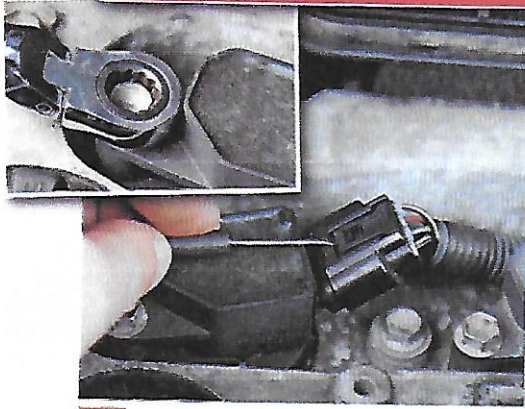


## UNDER THE BONNET (continued)



### 9 SPARK PLUG ACCESS

Before you reassemble the air filter box, you need to change the spark plugs, which are situated underneath. Three are easy: unclip the wiring to each of the coil packs, which are held in place over the plugs by a 10mm bolt. Unfortunately, the final plug and coil pack is covered by the air filter box support bracket.



### TOP TIP

If it helps, undo the fourth (right-hand) 10mm bolt for the air filter box to give yourself more movement to work with.



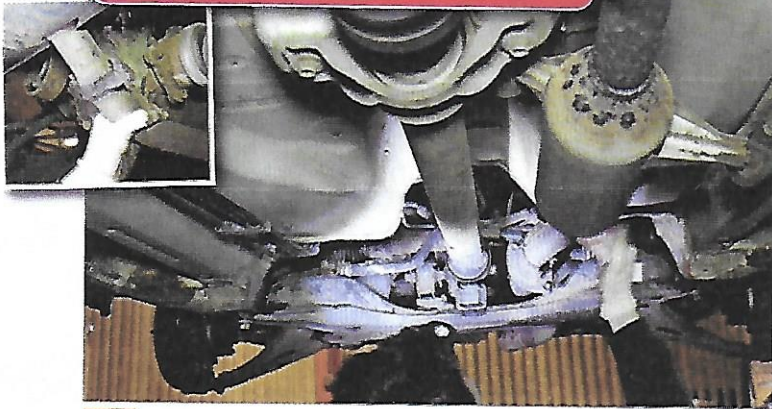
### 11 CHANGE SPARK PLUGS

With the coil pack wiring unplugged and the bolts undone, pull out each one in turn. Use a 16mm long-reach socket to undo each plug, but take care when extracting them in case they drop and break. Replacements are NGK 1FR6T11 plugs or equivalent and should be torqued to 20Nm.

### 10 REMOVE FILTER BRACKET

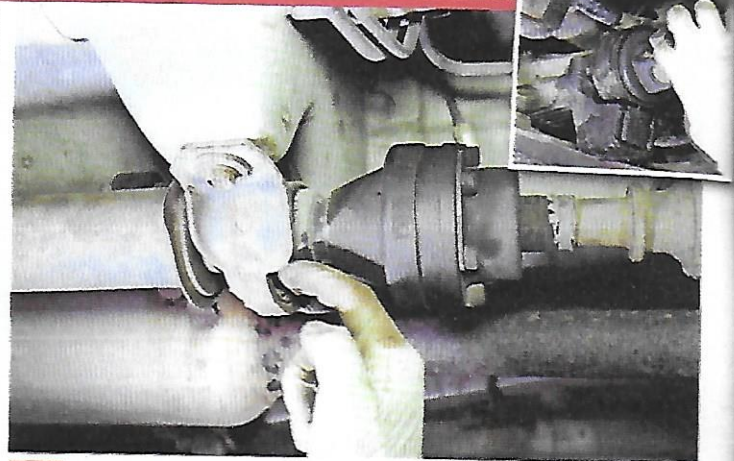
To get at the final plug, undo three of the 10mm bolts that hold part of the air filter box in place. With a bit of manipulation, this will allow you to move the bracket out of the way sufficiently to detach the coil pack. It's tight, though, and you may need to get an assistant to help.

## UNDER THE VEHICLE – FRONT



### 12 CHECK UNDERBODY CONDITION

On a vehicle of this age there may well be some corrosion, especially if it has been used off-road. Inspect the underside thoroughly for any rust or damage, scrutinising the exhaust and its mountings for security. Also check any exposed brake and fuel lines for corrosion and leaks.



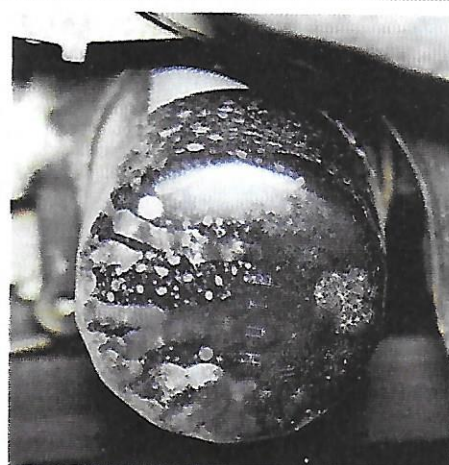
### 13 CHECK PROPSHAFT

Unlike some 4x4s, there are no lubrication points on the propshaft, but check there's no significant play and that the universal joints are in good order. You should also investigate the rear differential; remove the check plug on the axle to make sure the oil level inside is up to the aperture.



### 14 DRAIN ENGINE OIL

Oil should be drained when it is warm but not hot. Official oil capacity is 4.2 litres – while not all of this will come out, have a container underneath sufficient to contain such a volume and dispose of it environmentally. Clean the plug after draining and re-torque to 47Nm.



### 15 CHANGE OIL FILTER

The spin-off oil filter is easily accessed from underneath, adjacent to the sump. Any standard filter removal strap should remove it. Lubricate the top gasket sealing ring of the new filter with clean engine oil before installing it; tighten it by hand, then give it an extra three-quarter turn using the strap tool.



### TOP TIP

You'll need to pour the oil in slowly, as there's limited clearance under the oil filler aperture. Spillage is likely if rushed.

### 16 REFILL ENGINE OIL

Use 5W-30 fully- or semi-synthetic engine oil to refill. You'll need about four litres, using a funnel in the filler hole under the bonnet. Put in about three litres, then start the engine briefly to allow it to circulate, and top up until full, making reference to the dipstick. Check underneath for leaks.